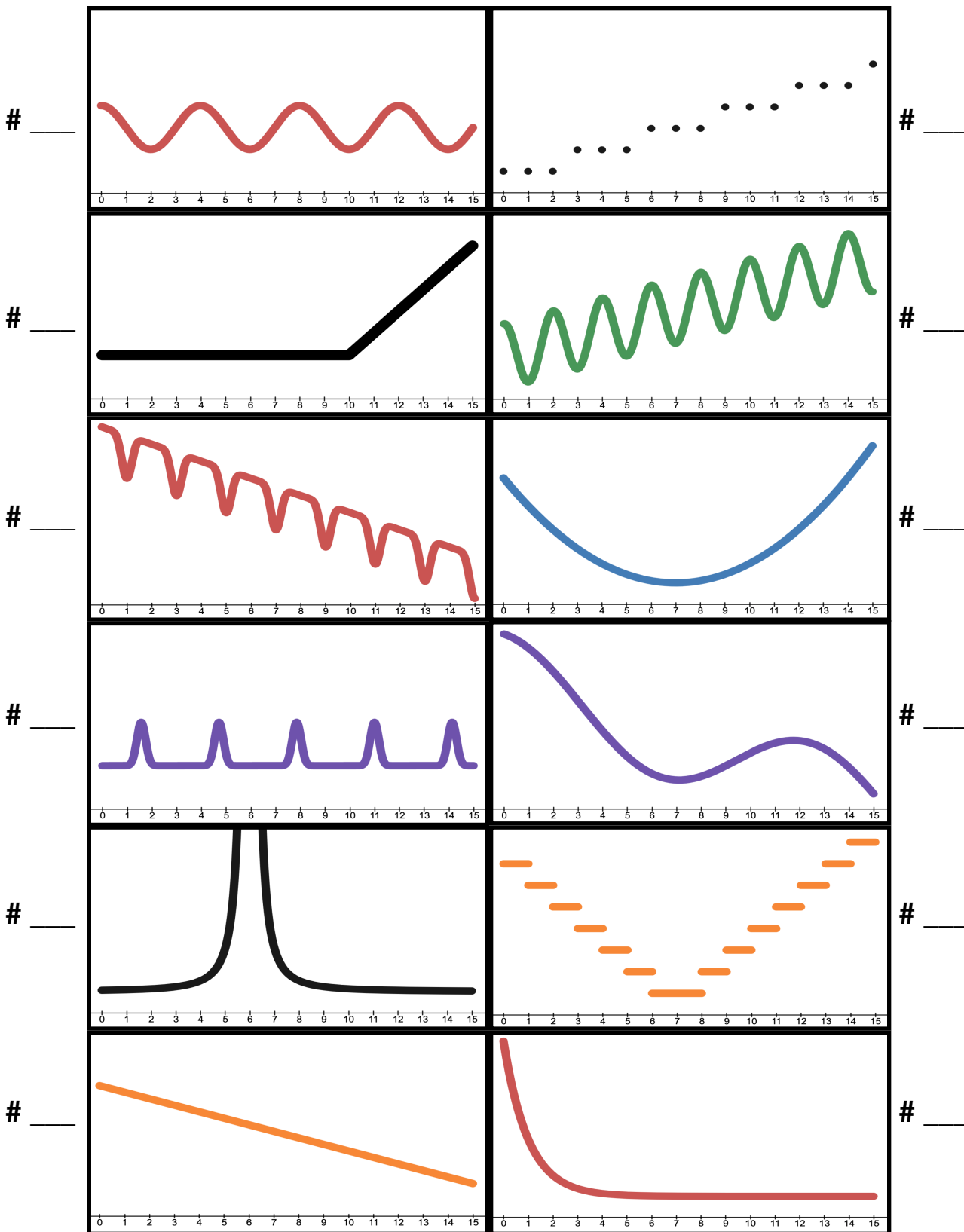


Match each graph with its sound. Shade its domain using three different colors.

Increasing color: Decreasing color: Constant color:



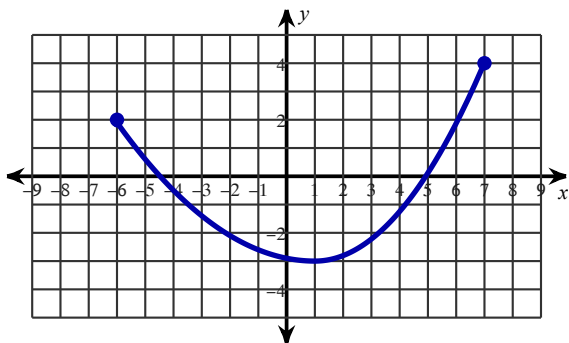
1) increasing:

decreasing:

constant:

max:

min:



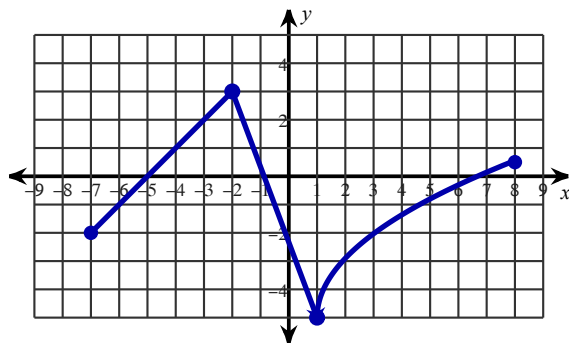
2) increasing:

decreasing:

constant:

max:

min:



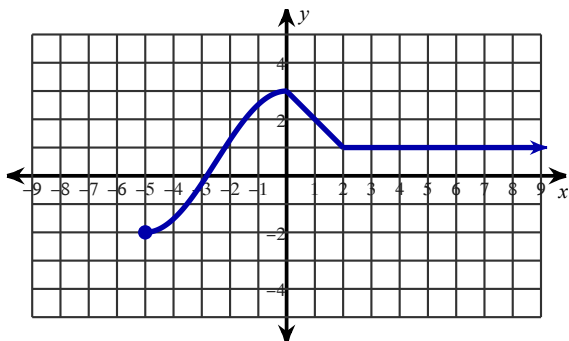
3) increasing:

decreasing:

constant:

max:

min:



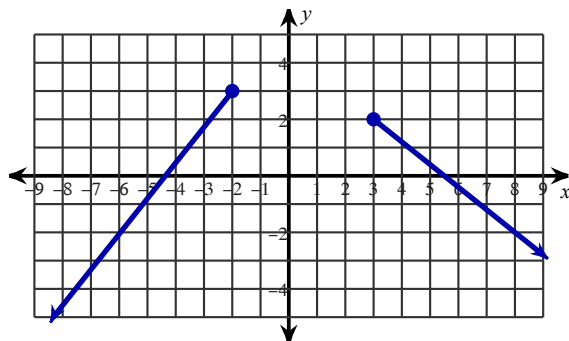
4) increasing:

decreasing:

constant:

max:

min:



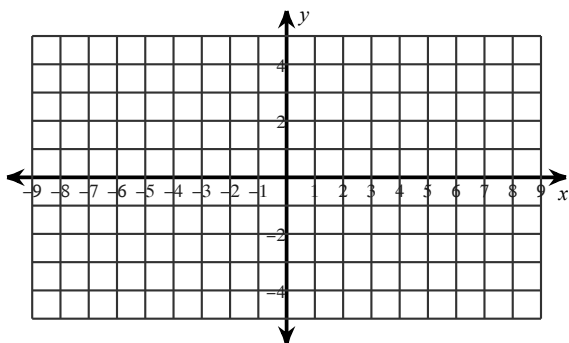
5) increasing: $-2 < x < 4$

decreasing: $4 < x < 8$

constant: $-7 < x < 2$

max: (4, 5)

min: (8, -1)



6) increasing: $-\infty < x < 0$

decreasing: $0 < x < 4$

constant: none

max: (0, -2)

min: none

